



SMIC 2013



C 4 2013

: : 981
SMIC I e Re a

Feb a 2014



A 1995

T e e a c a , add ca f a , f ad- g a e e e ea g f e afe ab
 f e U.S. P ae Sec e L ga Ref Ac f 1995. T e e f ad- g a e e , c d g a e e de F Q a e 2014
 G da ce, ae e ega d g f e 2014 ca a e e d e ae ba ed SMIC c e a , e eca ad ec
 ab f e e e . SMIC e d e be e e, a c ae, e d, e ae, e ec, ec, age, a ad a e e
 de f f ad- g a e e , a g a f ad- g a e e c a e e d. T e e f ad- g a e e
 e g fca , b ad , ce a e ad e fac a a ca e SMIC ac a ef a ce, f a ca
 c d e f ea be ae a d f e e f e gge ed b ef ad- g a e e c d g, a g e ,
 a caed eg ba ec c d , de dg e f e d g ga a d f a ca ab e d a e .

I e d c de e f a c a ed SMIC f g e U.S. Sec e a d E c a ge C (SEC), c d g
 a a e 20-F fed e SEC A 15, 2013, a a e ded Dece be 19, 2013, e eca e c da ed f a ca
 ae e , a d c e d c e a SMIC a fe e SEC T e H g K g S c E c a ge L 311.6502 c BT 10.5.00.2(□) 0650



2013

()

\$2.07

21.6%

C

\$173.2

\$22.8

2012

40/45

12.1%

1.1%

2012

\$738

69.6%

2013

()

▪ C

\$462.5

\$104.0

▪ C

\$770

C

\$499

2012

▪

C

-

40.4%

,

-

C

33.9%

2012

▪

45.2%

C

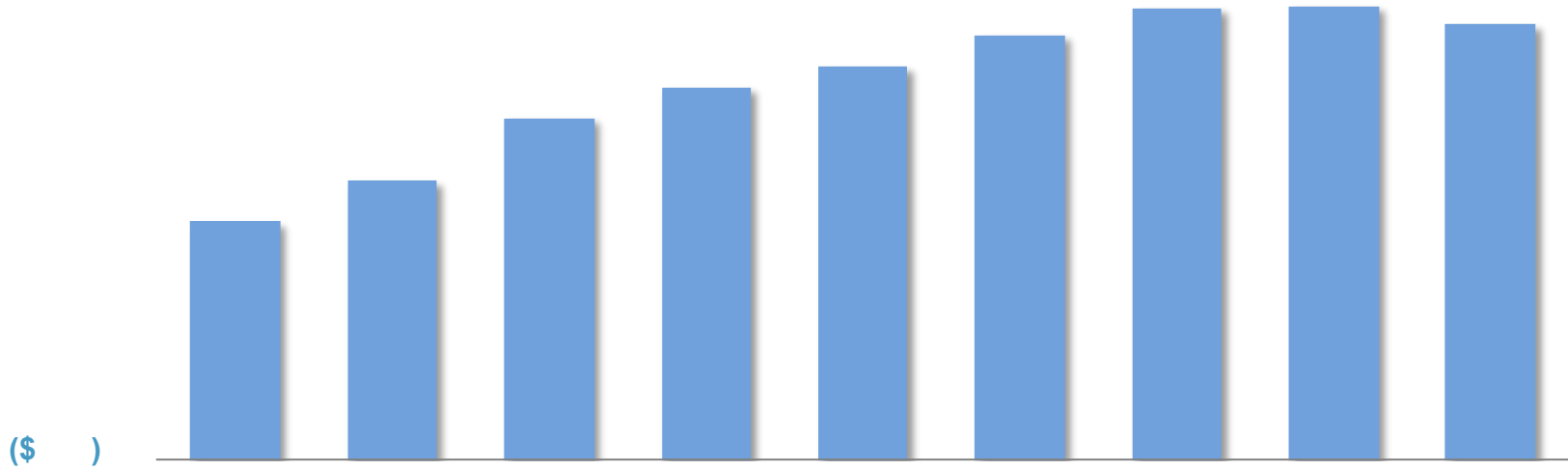
48.3%

2012

4 13



- AA



■ Reference: Reference for 1Q14 and 4Q13. The difference is \$8.2.

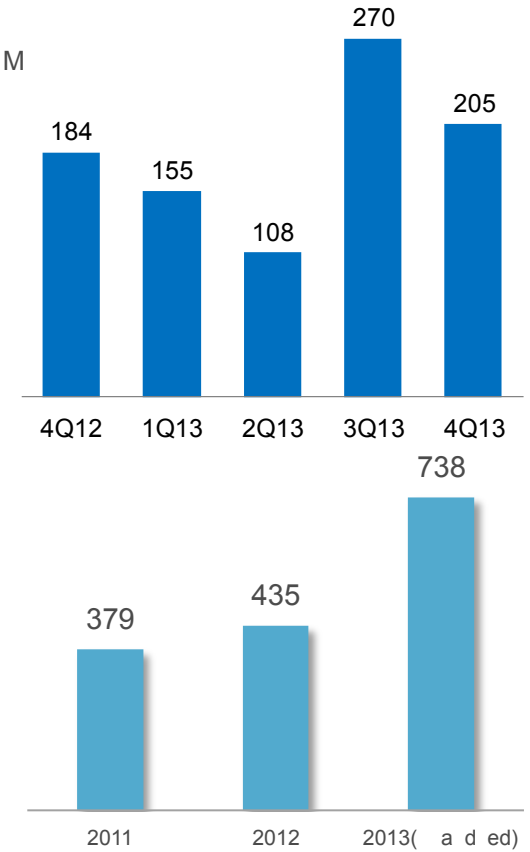
C

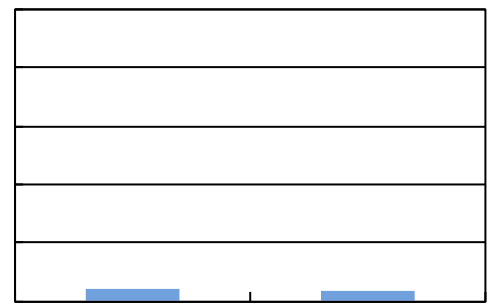
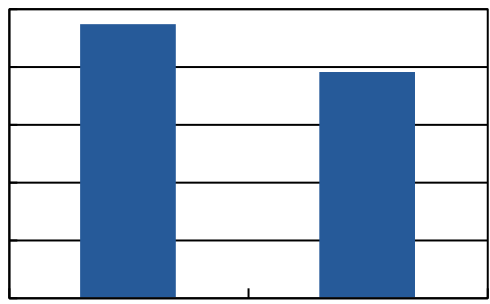
(US\$ thousands)

	31, 2013	30, 2013
C	473,507	262,955
	205,437	269,581
	(269,147)	(213,133)
()	52,749	154,045
()	(11,024)	210,552
C	462,483	473,507

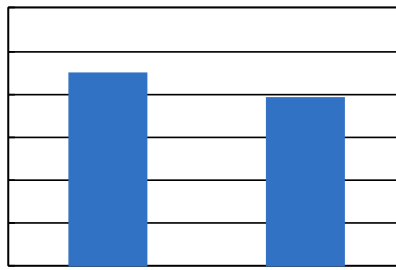
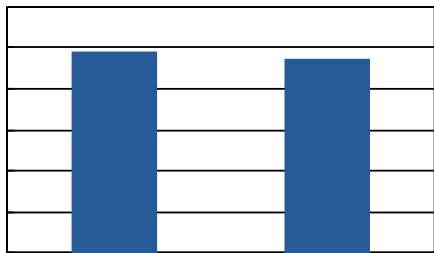
C

US\$ M

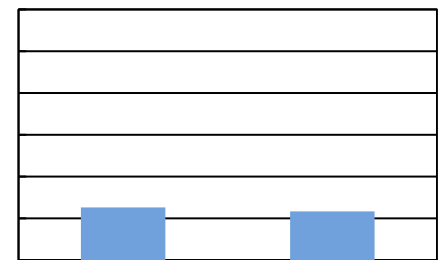




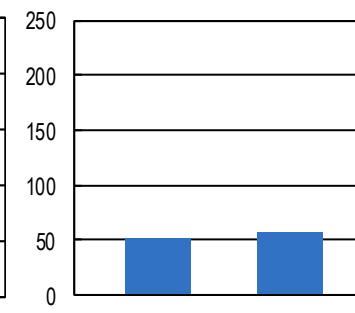
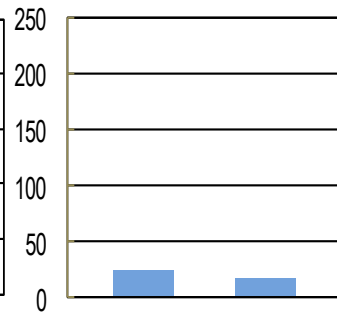
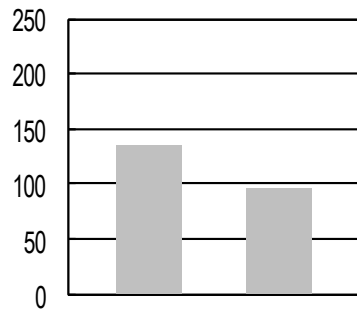
B



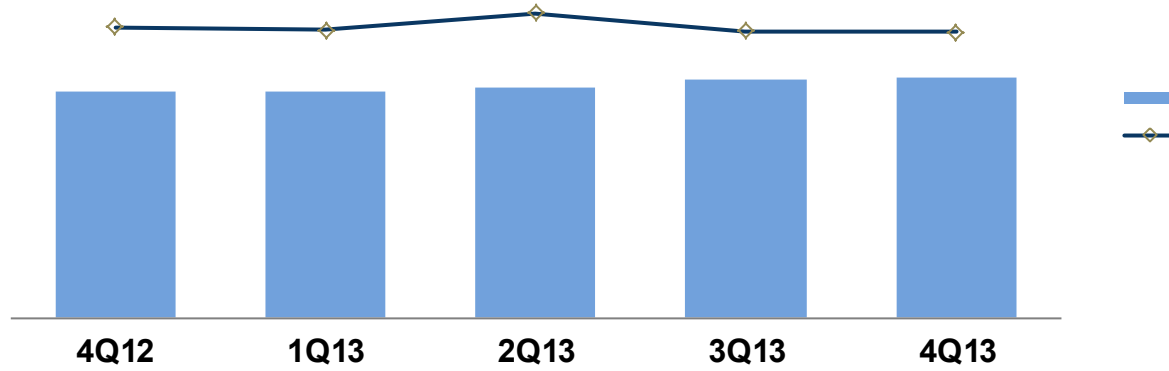
Q2 Q3



Q2 Vs Q3



C



(1) Ca ac a a e e ed ba ed a e a e afe d ded b e a ed a a e
ca ac

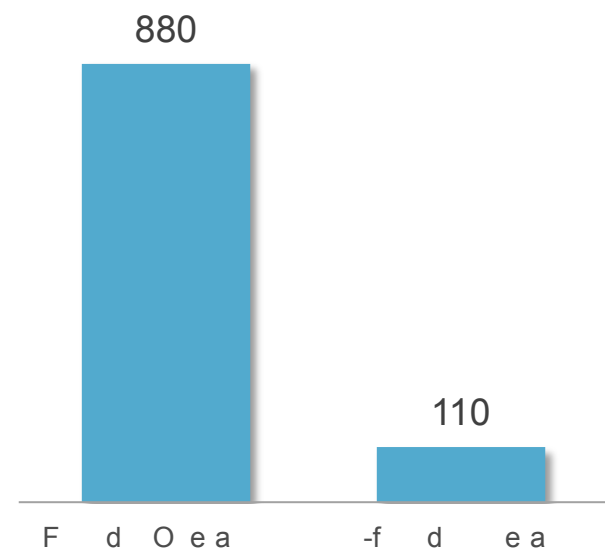


1 2014

2014 C

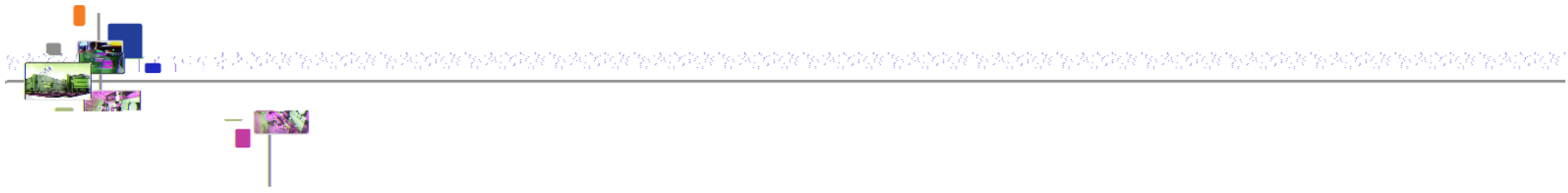
	1 2014	2014 C
(1)	\$440	\$460 (-9, -5%)
		16% 19%
(2) - AA	\$88	\$92

2014 C (\$) (3)(4)



- (1) T e e e g d a c e g e e a e e e e a f e e f W a X 4Q13.
- (2) E c d e e e f f e g e c a g e, e e b a c c a, f d g f R&D c a c f e g e e a d g a f e d a f g a e .
- (3) T e a e d 2014 c a a e e d e f f d e a a a e \$880 f c a d \$570 f e B e g e c, c 55% f d e d b S M I C a d 45% f d e d b e e a e d e f e e c .
- (4) I a d d , e a e b d g e e d 2014 c a a e e d e f -f d e a f a a e \$110 a f e c c f g a e .





A

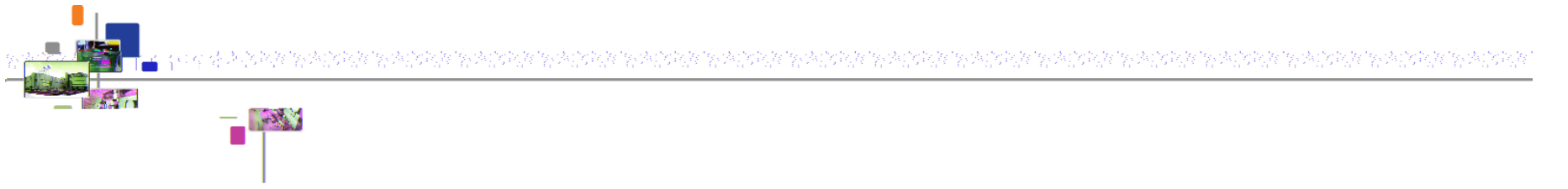


2013 C

&

()

<i>(US\$ millions)</i>	1 13	2 13	3 13	4 13	2013
C	185	302	169	114	770
A &	136	136	137	139	547



C ac : @ c .c